

SYNERGIC

**Opposites attract. Modern or traditional? Light or sturdy?
Durable or noble? Aluminum or wood?**

Thanks to the use of wood and aluminum, our Synergic product line is extremely durable and resistant to weather conditions. Following the current architectural trends, the Synergic windows design will be the true embellishment of your home.



Heat transfer coefficient
 U_f from: 0.16 Btu/hft²F



System depth:
3.6 in.

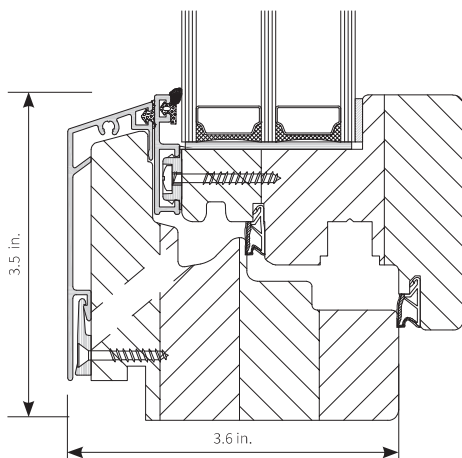
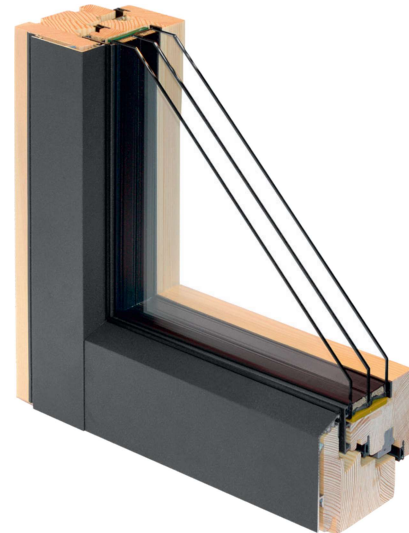


SHGC:
0.15 - 0.25



Vt:
0.29 - 0.43

- hidden sash
- various types of wood
- high resistance to weather conditions
- 3 sealing layers
- hidden hinges as standard
- burglary resistance in RC1n class as standard, possible RC2 class
- modern profile shape in line with the current trends in architecture
- high resistance to weather conditions
- numerous colors of wood and aluminium
- more sunlight than other wood-alu systems due to low window profiles
- possible without aluminum cladding



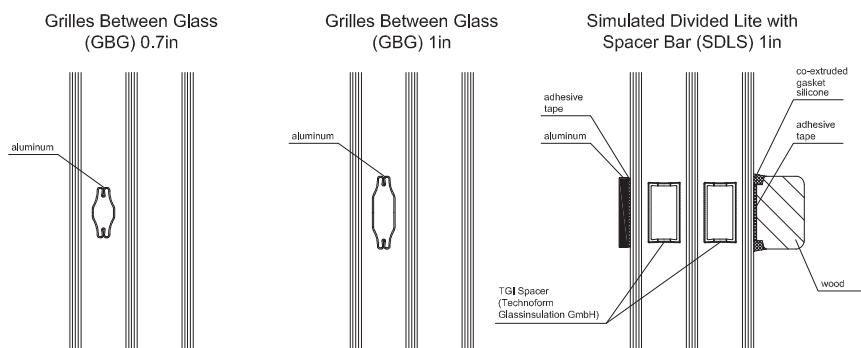
**FRAMES
33%
LOWER**
THAN OTHER
WOOD-ALUMINUM
SYSTEMS

Certified for NFRC and AAMA

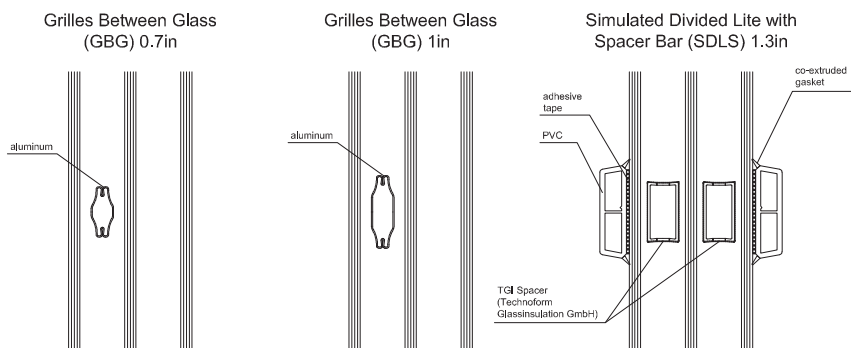


GRILLES

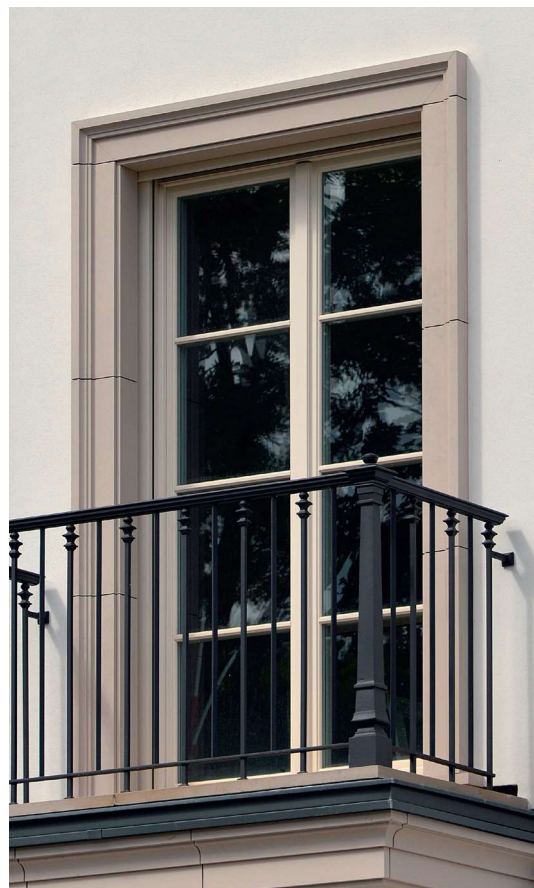
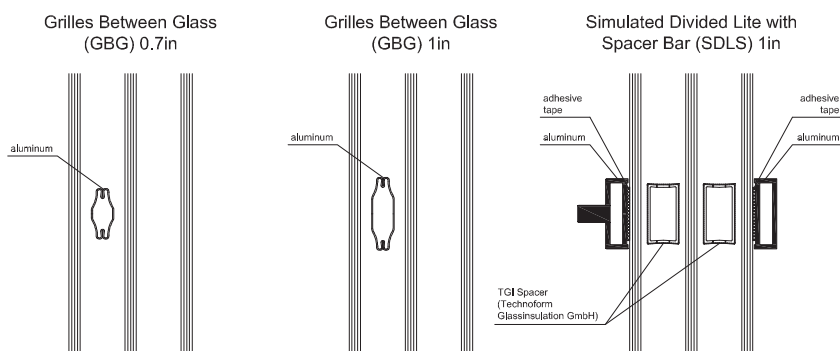
Grilles for wood windows



Grilles for uPVC windows



Grilles for aluminum windows



Softline Perfect

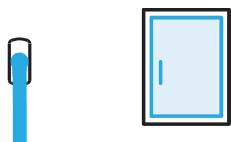


MB 70 hidden sash

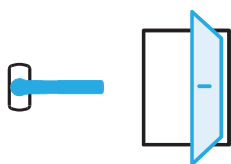
TILT AND TURN

Lever / sash position

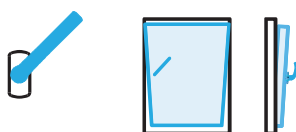
Meaning



Closed position of the sash
(if the room is unattended or no ventilation is desired)



Rotational position of the sash
(for short-term swift ventilation of the room or cleaning the outside windows)



Opening to a gap or night-vent position of the sash
(for continuous ventilation at low outdoor temperatures)



Tilted position of the sash
(for continuous ventilation of the room)



NAKŁADKA ALUMINIOWA
ALU-SCHALE
ALUMINUM CLADDING

WIDOK Z ZEWNĄTRZ
ANSICHT VON AUSSEN
OUTSIDE VIEW

UKRYTE SKRZYDŁO
VERDECKT LIEGENDER FLÜGEL
HIDDEN SASH

WIDOK OD WEWNĄTRZ
ANSICHT VON INNEN
INSIDE VIEW

UKRYTE ZAWIASY
VERDECKTE BESCHLÄGE
HIDDEN HINGES

