

EXTERIOR DOORS

WITH INSERT PANEL



1 AMADEA



2 GEMMA



3 AUREA



4 NONNA



5 GALLA



6 TARSYLIA



7 FLORA



8 ADARA



9 RAISA



10 TEONA



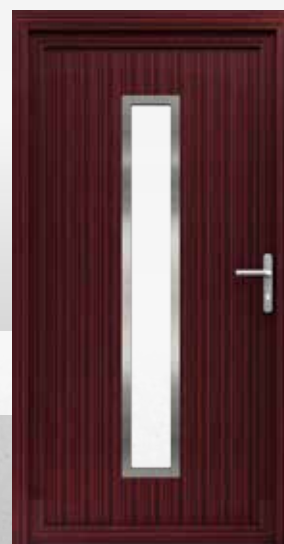
11 ARIANNA



12 CELIA



13 MIRANDA



14 GEORGIA



15 DIANA



16 CHLOE



17 ENA



18 IDA



19 BELLA



20 SIMA



21 TIRA



22 KENNA

Construction

The construction of doors with insert panel ensures the ideal visual balance between classic and modernity.

Sash



CLASSIC LOOK

Elegant insert panel

Panel



THERMAL INSULATION

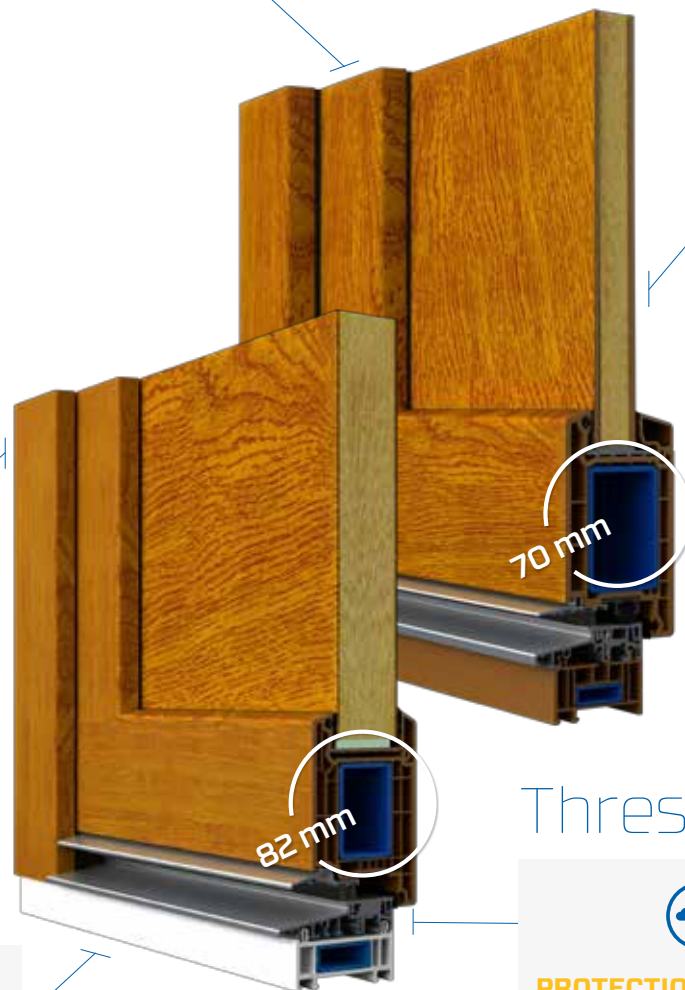
Filling made of thermo-insulation foam

Frame



STABILITY AND PROTECTION AGAINST COLD

Energy-efficient DPQ-82 profile or warm DPP-70 profile



Threshold



PROTECTION AGAINST COLD

Aluminium threshold of 20 mm height with thermal insert.



THRESHOLD STABILIZATION

Broadening of 30 mm height that reinforces threshold construction.

Standard equipment

The equipment of doors with insert panel provides the householders with warmth, security and perfect door functioning for many years.



✓ 3-POINT LOCK SYSTEM

- Two closing elements
Massive hook pin provides high level of security.
- Automatic closing
Security without the need to close the door with key.
- Installation of the lock system along the entire height of sash.
Fitting notch is invisible what guarantees the opened door and elegant look.



✓ LOW-EMISSION PACKET

Composite glass packet filled with noble gas, of construction depending on the installation depth (82 mm or 70 mm) and panel choice.



✓ HANDLE ON FULL HANDLE PLATE WITH ROSETTE

Standard colours:

white, brown or silver (depending on door colour)

Optional colours:

silver (F1), old gold (F4), stainless steel



✓ INSERT

- with key or butterfly



✓ SURFACE HINGE

Standard colours: white

Optional colours: brown, silver, old gold, RAL 7016 (dark grey), RAL 9005 (black)

Optional



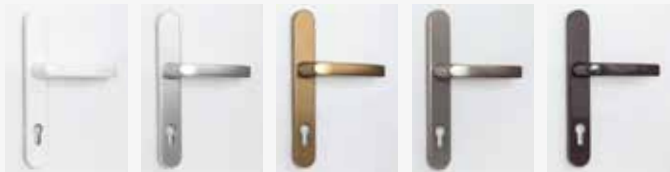
✓ 'DAY AND NIGHT' FUNCTION OF LOCK SYSTEM

This function allows the day or night door protection option to be chosen.

✓ HANDLE ON FULL HANDLE PLATE WITH ROSETTE

Colours:

- white, silver (F1), old gold (F4), stainless steel, brown, RAL 7016 (dark grey), RAL 9005 (black)



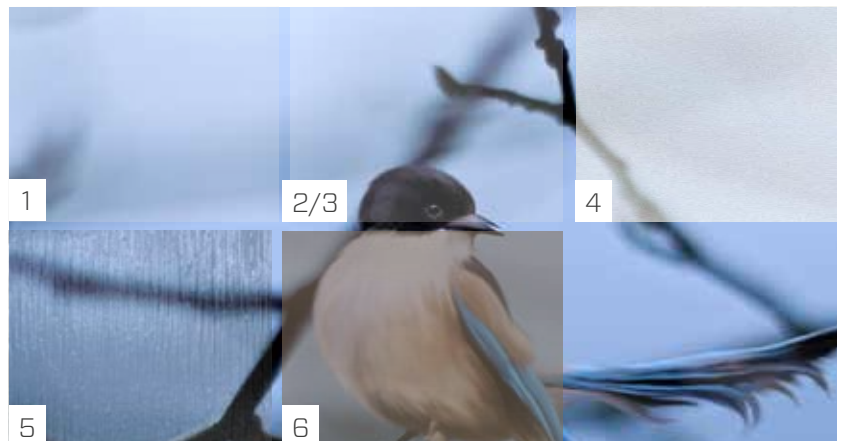
✓ GRIPS

- P-10** | Available length [mm]: 580, 800, 1000, 1200 ○ | 1400, 1500, 1600, 1800 | ○
- Q-10** | Available length [mm]: 580, 800, 1000, 1200 □ | 1400, 1500, 1600, 1800 | □

✓ GLASSES

- 2/B/2 - safe glass with foil
- P2 of increased protection against burglary
- P4 anti-burglary glass
- Sandblasted
- Ornamental
- Reflective
- With warm-edge spacer

* Do you need different glass? Contact us via www.dako.eu - we will be delighted to help you.



equipment



✓ INSERTS

- Insert of C anti-burglary class (standard or with butterfly)

✓ SELF-CLOSER

Causes automatic and controlled sash back of door to the closed position.

ROLLER HINGE

The hinge is available in following colours:

- white, brown, stainless steel, RAL 1036 (resembling old gold), RAL 7016 (dark grey)

✓ EXTERNAL ROSETTES



Anti-burglary 33KZ-1

Colours: white, F1, stainless steel



Anti-burglary 33KZ-2

Colours: white, F1, stainless steel



✓ FINGERPRINT READER

The doors opened with a fingertip provide exceptional convenience. They are completely safe, warm and reliable



High security of the lock is confirmed by A class certificate of German VdS organization.

Convenience – opening with fingertip

Comfort – keys, codes and opening cards are unnecessary

Economy – duplicating of keys and changing of locks are unnecessary

Security – resistance to shorting wires of scanner and other manipulations

Reliability – correct operation from -40°C to 85°C

Warranty – 24-month manufacturer's warranty



COLOURS



Durability and aesthetisc

COLOURS OF DOORS WITH ATTACHMENT PANEL

Standard colours



RAL3011



RAL5011



RAL6009



RAL7001



RAL7012



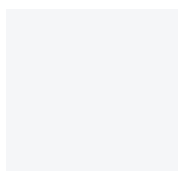
RAL7015



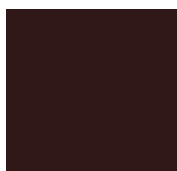
RAL7016



RAL9005



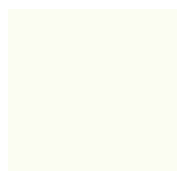
RAL9016



RAL8017



RAL9007



RAL9001

Optional colours



Any RAL colour

COLOURS OF WINDOWS AND DOORS WITH INSERT PANEL

Standard colours



Golden oak



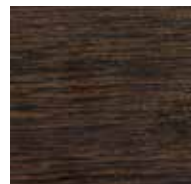
Nut



Winchester



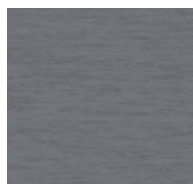
Mahogany



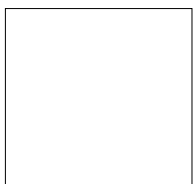
Swamp oak



Tabasco ⁽¹⁾



Anthracite



White



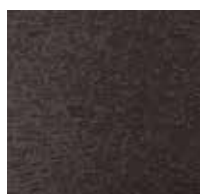
Sheffield oak ⁽³⁾

COLOURS OF WINDOWS AND DOORS WITH INSERT PANEL

Special colours ⁽¹⁾



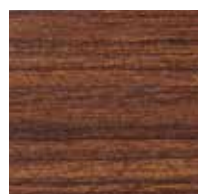
creamy white



brown



light oak



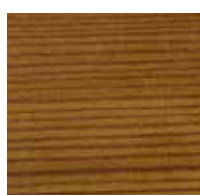
macore



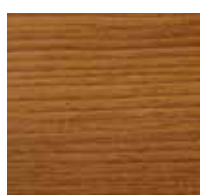
siena noce



siena rosso



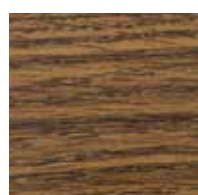
nuanced daglesia



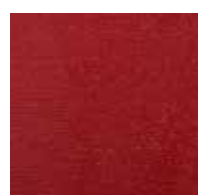
mountain pine



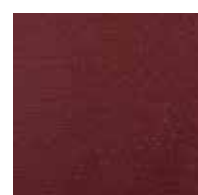
oregon III



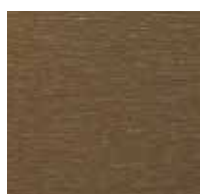
rustic oak



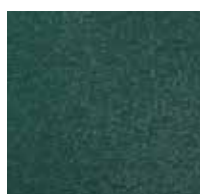
ruby



red-brown



platinum crown



green



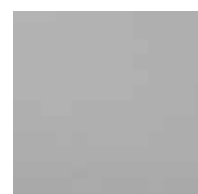
dark green



cobalt blue



navy blue



light grey



agate grey



silver grey



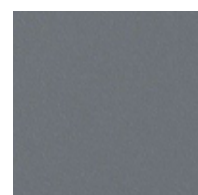
smooth silver grey



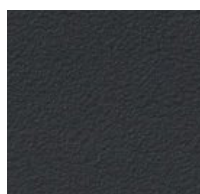
basalt grey



smooth basalt grey



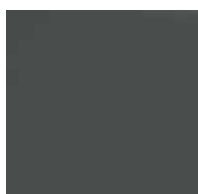
quartz grey



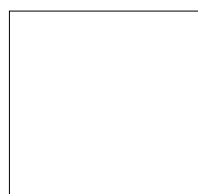
dark grey silk



black ⁽²⁾



dark grey ultramat⁽⁴⁾



White -9152.05 ⁽¹⁾



dark grey ALUX ⁽²⁾

Presented colours are for reference only and may vary from the real colours.

⁽¹⁾ In DPB-82, DPB-73 i DPB-73+ systems only standard colours, except for tabasco and white - 9152.05. are available.

⁽²⁾ Colour available only for DPP-70, DPQ-82/thermoSecure /AL series.

⁽³⁾ Sheffield oak colour unavailable only for DPE-70 i DPE-70+ series.

⁽⁴⁾ Available only for DPQ-82 series (only in exterior version)