

# DPP-70 Slime Line

## Maximum lighting of the interior

- ✓ Narrow sash and frame
- ✓ Lighting of the interior
- ✓ Modern visual effect

Innovative DPP-70 Slim Line system has been created to meet the expectations of growing market requirements. As compared to classic DPP-70 line, the windows in Slim Line system are characterised by exceptionally narrow frame and sash what guarantees greater surface of the windowpane and allows more daylight to be transmitted to the interior. The room becomes more spacious and the large glazing allows us to enjoy the beauty of landscape.



### DPP-70 Slime Line

- 5-chamber A class profile of 70 mm thickness
- double-glass packet 1,0 W/m<sup>2</sup>K
- steel of closed cross-section in frame
- 4-stages tilting mechanism







# DPP-70 WS

## Space, warmth, functionality

- ✓ Narrow sash
- ✓ Lighting of the interior
- ✓ High thermal insulation

Windows of DPP-70 WS series are a proven solution of high thermal insulation and full functionality. Innovative series of energy efficient windows that has been equipped with warm 5-chamber profiles of A class security and double-glass packets for optimal thermal insulation. Fittings with microventilation system influence proper air circulation of the interior. Possibility to choose the profile shape allows to perfectly adjust the window to the building elevation and the interior.



### DPP-70 WS

- 5-chamber A class profile of 70 mm thickness
- double-glass packet 1,0 W/m<sup>2</sup>K
- steel of closed cross-section in frame
- 4-stages tilting mechanism

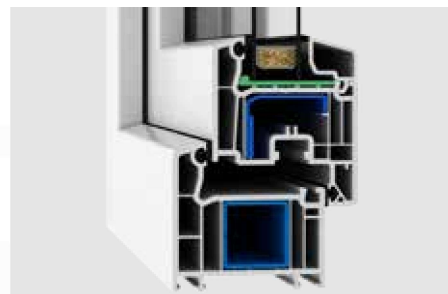


## DPP-70, DPE-70 / DPE-70+

### Three versions of classic solution

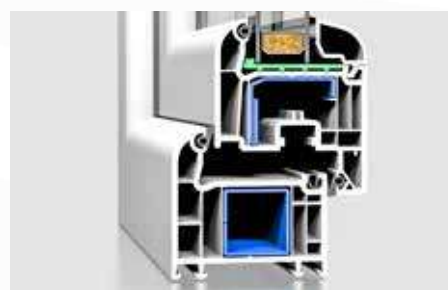
- ✓ Warmth and low energy loss
- ✓ Wide range of equipment
- ✓ 3 visual variants

A proven solution guaranteeing good thermal insulation and full functionality. Windows are constructed of warm, 5-chamber profile of A class security and energy efficient double-glass packet as well as richly equipped fitting. Possibility to choose the profile shape allows to perfectly adjust the window to the building elevation and the interior.



#### DPP-70

Clearly marked edge



#### DPE-70

Modern, rounded edge

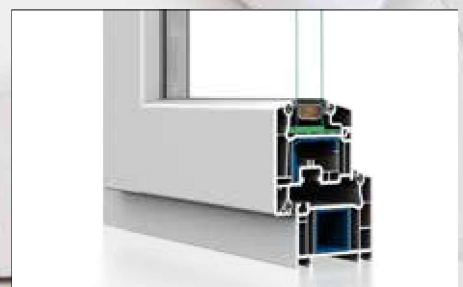


#### DPE-70+

Rounded edge  
Sash semi-flushed with frame

DPE70+ | Nuanced diagesia





**Cobra fittings with  
scissor hinges available  
in 2 versions:**

- ✓ turn sashes (opening angle 90°) with cleaning function
- ✓ tilt sashes (max. weight of sash 24 kg)





## FITTINGS FUNCTIONS



### STANDARD PLUS

The fitting has been equipped with two anti-burglary catches in each sash. In turn&tilt sashes one of the anti-burglary catches is the unique anti-burglary blockade with double lock available only in DAKO.

Additionally, the handle rotation blockade with lift mechanism influencing easy operation of this elements has been applied in this fitting.



### TILT FIRST

The handle set horizontally tilts the window, while full opening requires the handle to be set vertically. In connection with TBT handle it allows to restrict the possibility of sash opening. Without the key it can only be tilted what eliminates the risk of falling out.



### INVISIBLE HINGES

When the sash is closed the hinges are invisible what gives the windows exceptionally elegant appearance and facilitates keeping them clean. A great advantage of the fittings is an easy regulation without using the tools.



### SLOT VENTILATION

The system enables to achieve the distance of 6 mm between sash and frame what ensures efficient ventilation without radical cooling of the interior. During ventilation the fitting has an increased level of protection

against burglary and the vertical position of the handle does not show that the window is unsealed. The sash maintains stable po-

## MOVEMENT SENSORS



The sensors integrated with the fitting transmit the information of window closing or opening to the selected systems activating them accordingly to the user's expectations.

### USAGE

**Air-conditioning** – window opening causes automatic deactivation of the air-conditioners and gives savings resulting from limiting inefficient air-conditioning operation.

**Heating** – sash opening causes deactivation of the heater under the window, therefore, the costs of inefficient heating can be avoided. nic

**Alarm system** – information of the window status is transmitted to

the alarm system, activating the alarm, if needed.

- Three-function sensors distinguish the closed, tilted and opened window so the alarm system can be protected during ventilation.
- Sensors do not react to movement what allows them to be active when residents and animals are at home.
- Sensors are invisible from the outside and, therefore, the burglars cannot prepare themselves for attempting to disarm them.

## GLASSES



**3-glass packet 4/14/4/14/4**  
**INCREASED THERMAL INSULATION**

 Improves thermal insulation of windows. Total thickness of glass packet allows for its installation in all windows, regardless of the profile thickness.

### TECHNICAL PARAMETERS


Total solar energy transmittance: **g=51%**

Light transmittance: **Lt=72%**

Thermal permeability: **U<sub>g</sub> = 0,6 W/m²K**



**3-glass packet 4/18/4/18/4**  
**WARMTH AND EXTRA LIGHTING**

 Provides greater permeability of solar energy and light as well as improves heating and lighting of the interior.

### TECHNICAL PARAMETERS


Total solar energy transmittance: **g=50%**

Light transmittance: **Lt=70%**

Thermal permeability: **U<sub>g</sub> = 0,5 W/m²K**



**3-glass packet 44.4/14/4/14/4**  
**SECURITY AND PROTECTION**

 Characterised by high impact resistance. It is equipped with a filter protecting against high-energy fractions of sunlight and UV radiation.

### TECHNICAL PARAMETERS

Safety class: **P4**


Total solar energy transmittance: **g=45%**

Light transmittance: **Lt=69%**

Thermal permeability: **U<sub>g</sub> = 0,6 W/m²K**



**3-glass packet 4/14/4/14/33.1**  
**WARMTH AND SECURITY**

 Internal glass is covered by foil, therefore, broken glass does not disintegrate what excludes the risk of injury.

### TECHNICAL PARAMETERS

Safety class: **B2B**


Total solar energy transmittance: **g=47%**

Light transmittance: **Lt=70%**

Thermal permeability: **U<sub>g</sub> = 0,6 W/m²K**



**3-glass packet 44.2/12/6/12/6**  
**SILENCE AND SECURITY**

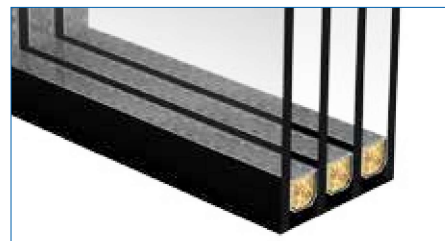
 Glass construction ensures high level of protection against burglary and increased acoustic insulation.

### TECHNICAL PARAMETERS


Safety class: **P2**

Acoustic insulation coefficient: **R<sub>w</sub> = 39dB**

Thermal permeability: **U<sub>g</sub> = 0,7 W/m²K**



**4-glass packet 4/12/4/12/4/12/4**  
**MAXIMUM ENERGY SAVING**

 Three chambers of 4-glass packet guarantee maximum thermal insulation making this packet an ideal product for passive houses.


### TECHNICAL PARAMETERS

Thermal permeability: **U<sub>g</sub> = 0,3 W/m²K**

Total solar energy transmittance: **g=33%**

Light transmittance: **Lt= 48%**

## WARM-EDGE SPACERS

 Warm-edge spacer improves thermal performance of the window.



Chromatech (standard for DPQ-82 thermoSecure, DPB-73 Thermo,



White



Light grey



Light brown

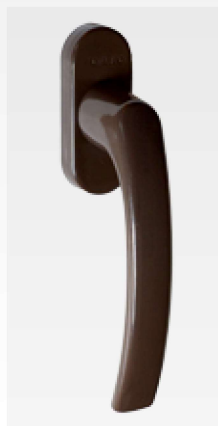


Dark brown





# HANDLES



**1006 HANDLE <sup>(1)</sup>**  
(standard)



**1007 HANDLE**



**1009 HANDLE**



**Vigilant HANDLE**



**1030 HANDLE**



**1033 HANDLE**

**NOVELTY**  
available only in DAKO



**SECUSTIK® LUKSEMBURG HANDLE**

Protected by the mechanism preventing the window from being opened from the outside.



**SECUSTIK® NEW YORK HANDLE**

Protected by the mechanism preventing the window from being opened from the outside.



**SECUSTIK® LUKSEMBURG HANDLE WITH KEY**

Opening Secustik® handle with key requires the key to be used what reduces the risk of accident and prevents the window from being opened from the outside.



**Mila HANDLE**

Opening Secustik® handle with key requires the key to be used what reduces the risk of accident and prevents the window from being opened from the outside.



**1006 HANDLE WITH BUTTON**

Window opening requires the lock release with the button what reduces the risk of an accident and prevents the window from being opened from the outside.

## COLOURS



White



F9 - Titanium



F1 - Silver matt



Brown - RAL 8707  
(only for secustik handles)



Brown - RAL 8019  
(does not apply to secustik handles)



F4 - Old gold



RAL 7016  
(dark grey) <sup>(2)</sup>



RAL 9005 (black) <sup>(2)</sup>

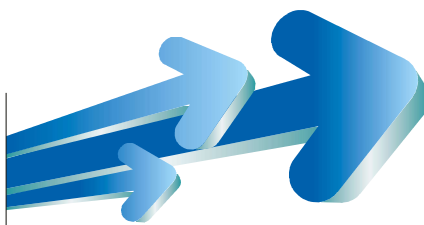
<sup>(1)</sup> handle 1006 available also in colours: RAL 7016 (dark grey), RAL 9005 (black)

<sup>(2)</sup> available only for handle 1006 (standard) and 1006 with key



F2 - Champagne <sup>(3)</sup>

## INDIVIDUAL CHOICE OF WINDOWS



There are no two identical houses and each interior has its own character. DAKO, as the first Polish company, presents the comprehensive system of the Individual Choice of Windows which allows to treat each interior with the exceptional care.



# EACH HOUSE IS DIFFERENT

## INDIVIDUAL CHOICE OF WINDOWS - WHAT IS IT?

In order to apply the Individual Choice of Windows to the building we take into account the most important factors that influence the choice of technological solutions suitable for each interior. The floor, insolation, location of noise sources and interior type are those most important to be taken into account.

### FLOOR



According to the police statistics, the ground-floor windows are more susceptible to burglary than the windows located on the higher floors. It concerns mainly the balcony windows. On the other hand, the windows located higher may put at the risk of falling the youngest members of the household.

✓ Carefully selected window fittings and accessories may help to reduce these risks by improving the householders' security.

### NOISE



The noise of busy streets and other sources may significantly affect the comfort of living in a dream house. It deteriorates the quality of sleep and has a bad impact on our general condition. In case of the elevation exposed to the acoustic waves activity, the weakest link that transmits the sound are windows.

✓ Due to the installation of the acoustic glasses, the sound transmitted to the interior is reduced what improves the householders' comfort.

### INSOLATION



Depending on the floor, the windows are subject to greater or lesser sunlight exposure. This has an impact on the quantity of light and UV radiation transmitted to the interior as well as on their heating up. As a result, the interior that are less sun-filled requires heating and lighting by the artificial light, whereas staying in those more sun-filled may be very uncomfortable during summer.

✓ A solution to the problem with the level of insolation is the installation of the glass that regulates the quantity of the daylight transmitted to the interior.

### INTERIOR TYPES



Each interior has its own character resulting from its function. From the bedroom we expect an ideal microclimate during the rest, and the children's room should be free from any risks. The living room is a representative place where the aesthetic plays a key role, while the bathroom and kitchen are particularly exposed to moisture.

✓ Careful selection of the window allows to improve the comfort of living and to eliminate the inconveniences typical for a particular room.



## 1

## Windows for the children's room

### Maximal security



**Floor:**  
1ST FLOOR



**Interior type:**  
THE CHILDREN'S ROOM



**Location:**  
SOUTH

**WE USE:** \_\_\_\_\_

**Fitting - Tilt first**

**Glass - 4/14/4/14/33.1 | Handle - TBT with key**

- ✓ Protection against falling out
- ✓ Protection against injury

- In the applied fitting, the handle rotation allows sash tilting but not its opening. In order to open the sash, the handle needs to be set in vertical position.
- Additional protection is the handle with key: when the window is closed with the key, only the function of sash tilting is available.
- In case of glass breaking, internal glass of the warm, welded packet protects against injury.

## 2

## Windows facing the street

### Silence and calm



**Floor:**  
GROUND FLOOR



**Interior type:**  
KITCHEN



**Location:**  
EAST

**WE USE:** \_\_\_\_\_

**Fitting - Slot ventilation**

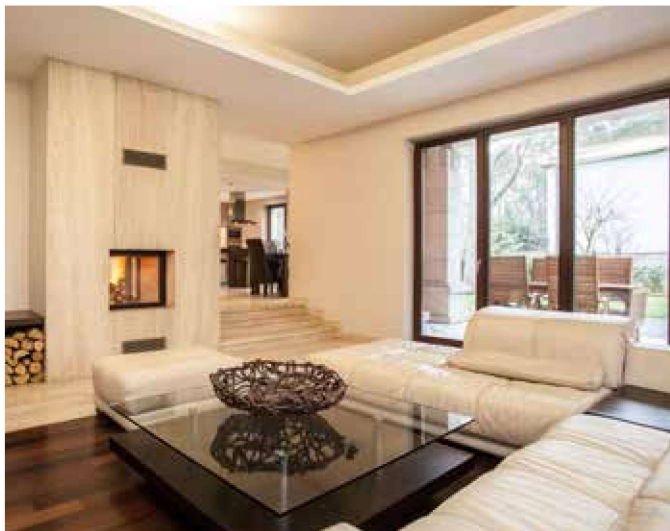
**Glass - 44.2/12/6/12/6**

- ✓ Effective absorption of solar heat
- ✓ Natural lighting

- Slot ventilation system applied in the window allows to safely and comfortably eliminate the moisture resulting from the kitchen works.
- During ventilation, the applied fitting maintains an increased anti-burglary class. Ventilation requires neither opening nor tilting the sash what makes the transmission of noise to the inside impossible.
- The acoustic glass of high P4 anti-burglary class provides the protection against the noises of the surrounding.

## 3 Windows for the living room

### Exceptional class and elegance



 **Floor:**  
GROUND FLOOR

 **Interior type:**  
LIVING ROOM

 **Location:**  
SOUTH

**WE USE:**

**Fitting - Invisible hinges**

**Glass - 44.4/14/4/14/4**

- ✓ Exceptional aesthetics
- ✓ Increased security

- Innovative fitting with invisible hinges providing the exceptional aesthetics of the interior has been applied in the window.
- For increased security, the fittings have been equipped by additional anti-burglary catches. Glass in this packet is of high P4 anti-burglary class.
- The applied glass packet filters the high-energy fractions of solar radiation and UV radiation.

## 4 Windows for the bedroom

### Comfortable and healthy sleep



 **Floor:**  
1ST FLOOR

 **Interior type:**  
BEDROOM

 **Location:**  
NORTH

**WE USE:**

**Fitting - Slot ventilation**

**Glass -4/18/4/18/4**

- ✓ Silent and energy-efficient ventilation
- ✓ Natural heat and light

- The slot ventilation system applied in the window allows for quiet and economical ventilation of the interior. It is particularly important in case of the bed room, where the possibility to provide the appropriate microclimate is a factor influencing the sleep quality.
- The applied glass allows to use the solar energy and transmits much more daylight. It is important in case of the northern exposure that is characterised by less lighting.



# COLOURS



Durability and aesthetisc

## COLOURS OF DOORS WITH ATTACHMENT PANEL

### Standard colours



RAL3011



RAL5011



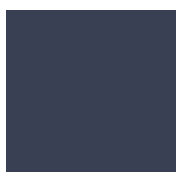
RAL6009



RAL7001



RAL7012



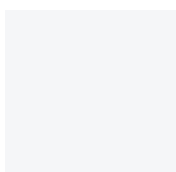
RAL7015



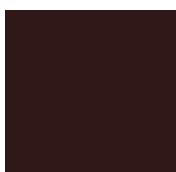
RAL7016



RAL9005



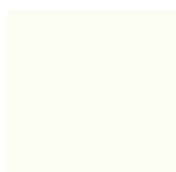
RAL9016



RAL8017



RAL9007



RAL9001

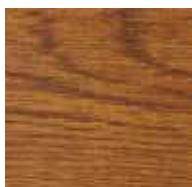
### Optional colours



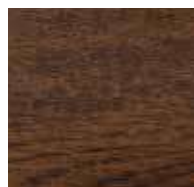
Any RAL colour

## COLOURS OF WINDOWS AND DOORS WITH INSERT PANEL

### Standard colours



Golden oak



Nut



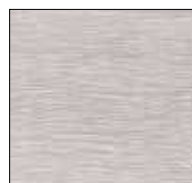
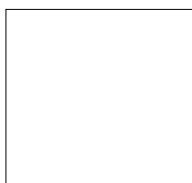
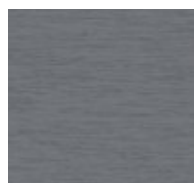
Winchester



Mahogany

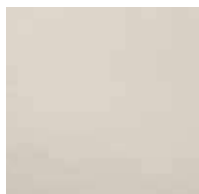


Swamp oak



# COLOURS OF WINDOWS AND DOORS WITH INSERT PANEL

## Special colours <sup>(1)</sup>



creamy white



brown



light oak



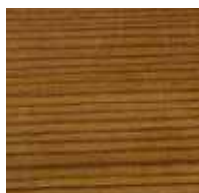
macore



siena noce



siena rosso



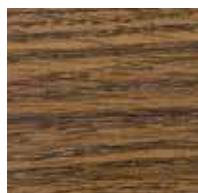
nuanced daglesia



mountain pine



oregon III



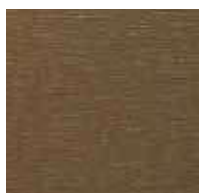
rustic oak



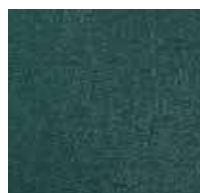
ruby



red-brown



platinum crown



green



dark green



cobalt blue



navy blue



light grey



agate grey



silver grey



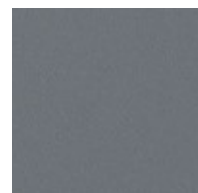
smooth silver grey



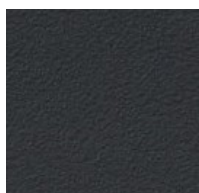
basalt grey



smooth basalt grey



quartz grey



dark grey silk



black <sup>(2)</sup>



dark grey ultramat<sup>(4)</sup>



White -9152.05 <sup>(1)</sup>



dark grey ALUX <sup>(2)</sup>

Presented colours are for reference only and may vary from the real colours.

<sup>(1)</sup> In DPB-82, DPB-73 i DPB-73+ systems only standard colours, except for tabasco and white - 9152.05, are available.

<sup>(2)</sup> Colour available only for DPP-70, DPQ-82/thermoSecure /AL series.

<sup>(3)</sup> Sheffield oak colour unavailable only for DPE-70 i DPE-70+ series.